

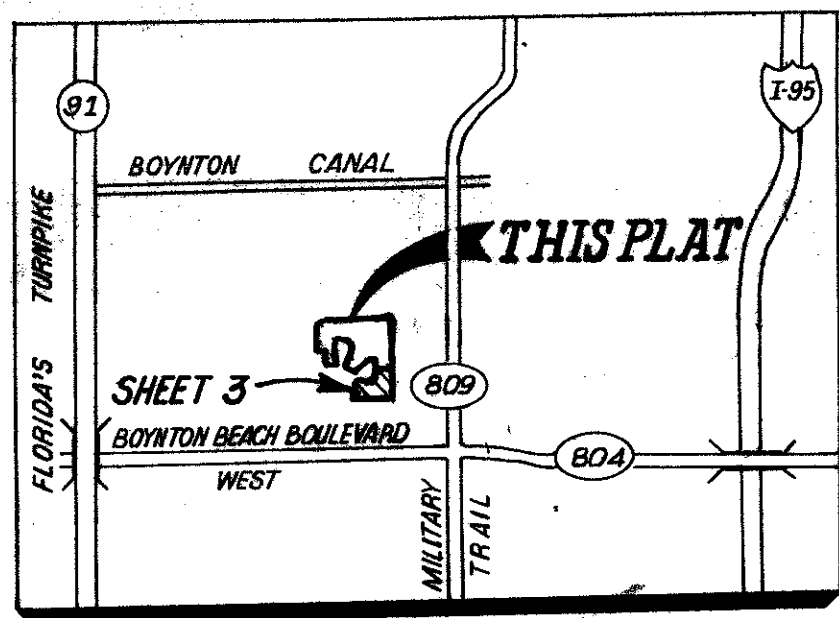
SUN VALLEY EAST PHASE II

0498-008

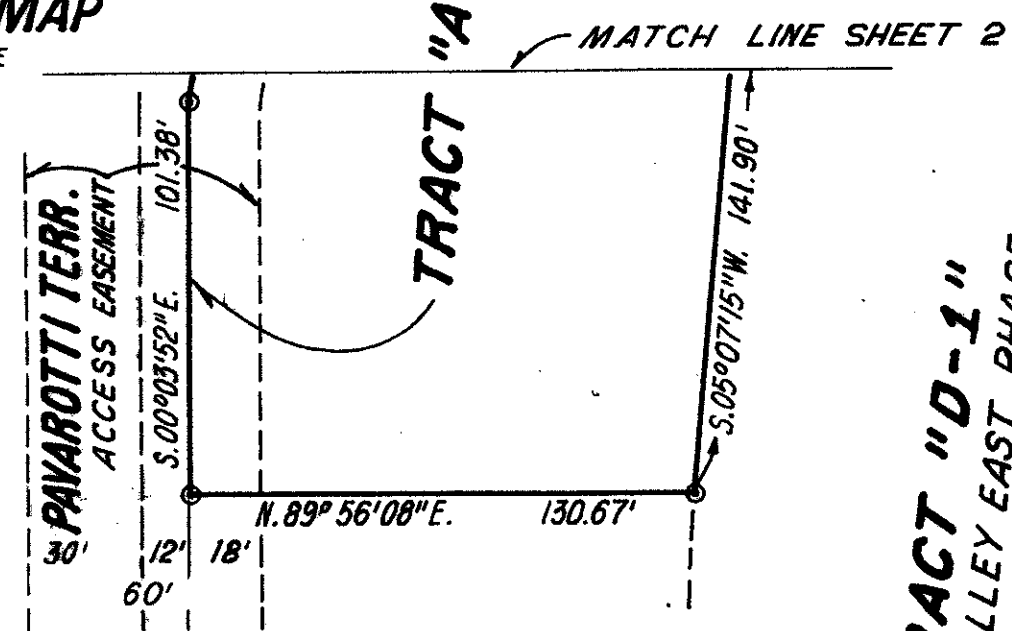
SUN VALLEY P.U.D.
A PLAT OF A PORTION OF SECTION 23, TOWNSHIP 45 SOUTH, RANGE 42 EAST, INCLUDING A REPLAT OF A PORTION OF BOYNTON GARDENS (6-32)
PALM BEACH COUNTY, FLORIDA

C.C. WINNINGHAM CORPORATION 1040 N.E. 45TH STREET OAKLAND PARK, FLORIDA, 33334

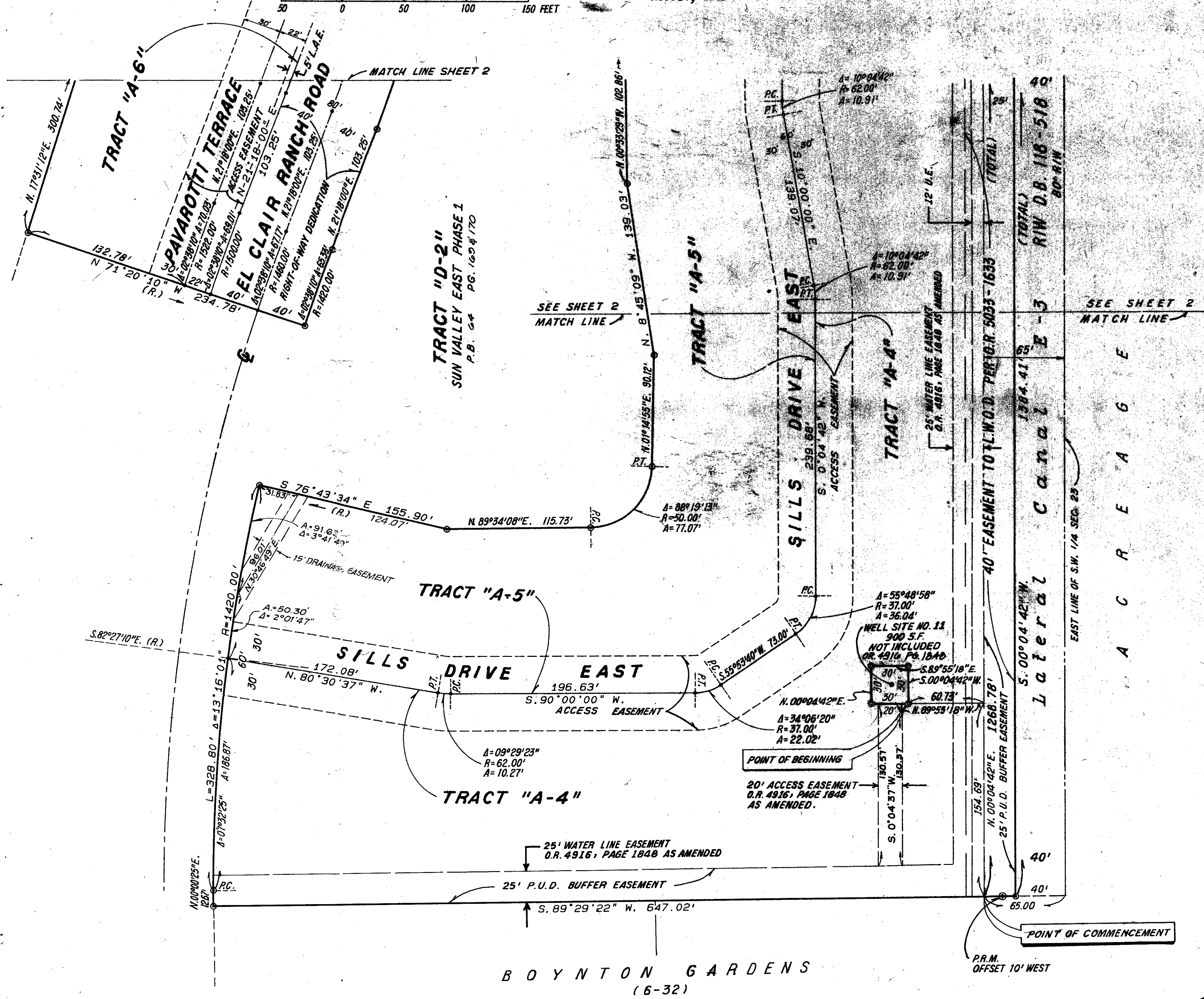
SCALE: 1" = 50' AUGUST, 1989 SHEET 3 OF 3



VICINITY MAP
NOT TO SCALE



TRACT "D-1"
SUN VALLEY EAST PHASE I
P.B. 84 P. 6. 1504/170



TA 2 444

CONVEYANCE OF SUN VALLEY EAST PHASE II
PLAT NO. 85-162
SUBDIVISION OF SUN VALLEY P.U.D.
P.L. 85-162

Plat. 85-162

0498-008

SUN VALLEY EAST PHASE II